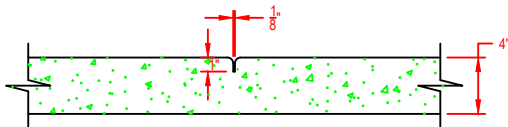
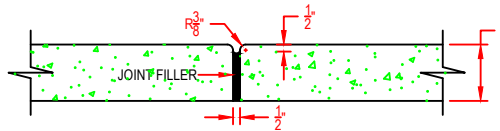


TYPICAL SIDEWALK CROSS SECTION



TRANSVERSE C.J. IN SIDEWALK



TRANSVERSE E.J. IN SIDEWALK

NOTES:

1. A GROOVE JOINT 1" DEEP W/ 1/8" RADII SHALL BE REQUIRED IN THE CONC. SIDEWALK AT 5' INTERVALS. ONE 1/2" E.J. WILL BE REQUIRED AT 45' INTERVALS NOT TO EXCEED 50' AND MATCHING EXPANSION/CONSTRUCTION JOINT IN ADJACENT CURB. A SEALED 1/2" E.J. WILL BE REQUIRED WHERE THE SIDEWALK JOINS ANY RIGID STRUCTURE.
2. SIDEWALK AT DRIVEWAY ENTRANCES TO BE 6" THICK.
3. WIDTH OF SIDEWALK ON THOROUGHFARE STREETS SHALL BE A MIN. OF 5'.
4. WIDTH OF SIDEWALKS ON NON-THOROUGHFARE STREETS SHALL BE A MIN. OF 5'.
5. SIDEWALK TO BE POURED TO END OF RADIUS AT INTERSECTING STREETS.
6. CONC. COMPRESSIVE STRENGTH SHALL BE 3600 PSI. IN 28 DAYS.
7. ZONING CONDITIONS MAY REQUIRED ADD. WIDTH SIDEWALKS WHICH SHALL SUPERSEDE THESE STD. DIMENSIONS SHOWN.

--

Mailing Address: P.O. BOX 487 blacksburg, SC 29702 Town Hall: (864) 839-2332 Cell: (866) 967-6948 Email: dotlow@townofblacksburg.com Website: www.townofblacksburgsc.com
--

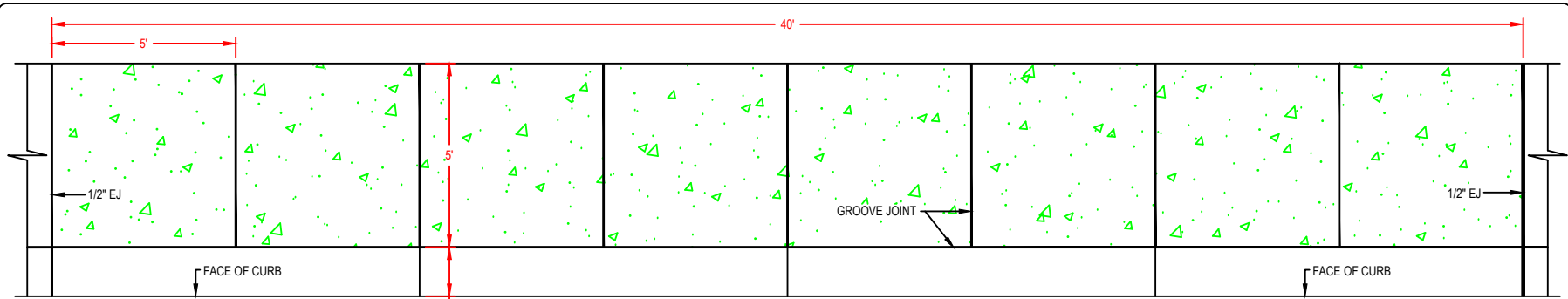
Project Name: Town of Blacksburg South Carolina 105 S. Shelby St. Blacksburg, SC 29702 105 S. Shelby St. Blacksburg, SC

Sheet Title: SIDEWALK

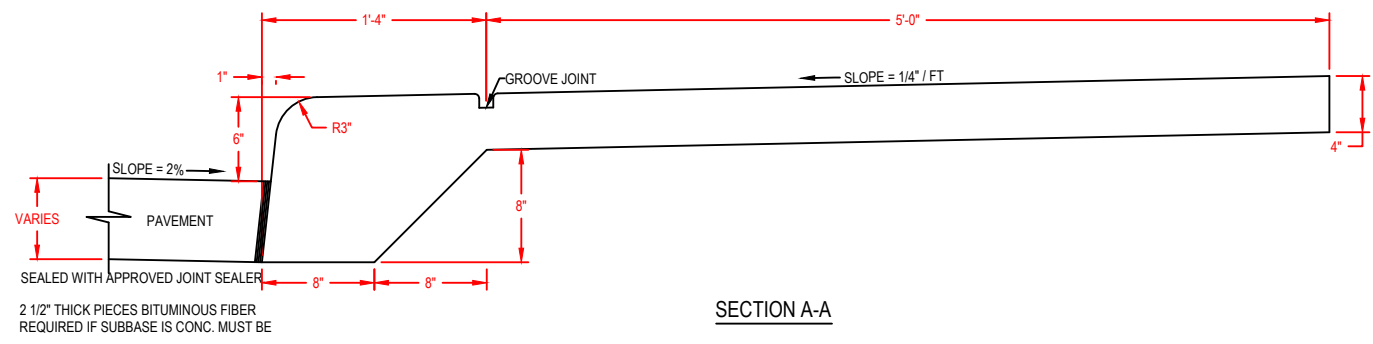
Drawn By: Samantha Lee Designed By: Patrick N. Sodek Date: 12-01-2021 Scale: N.T.S. Job No.: CP/17-120114

Sheet No.: CP

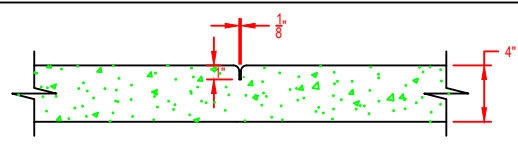
--



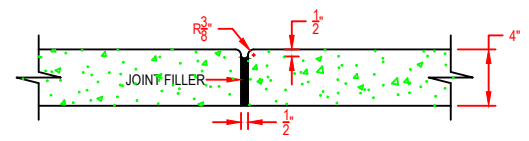
SIDEWALK PLAN VIEW



SECTION A-A



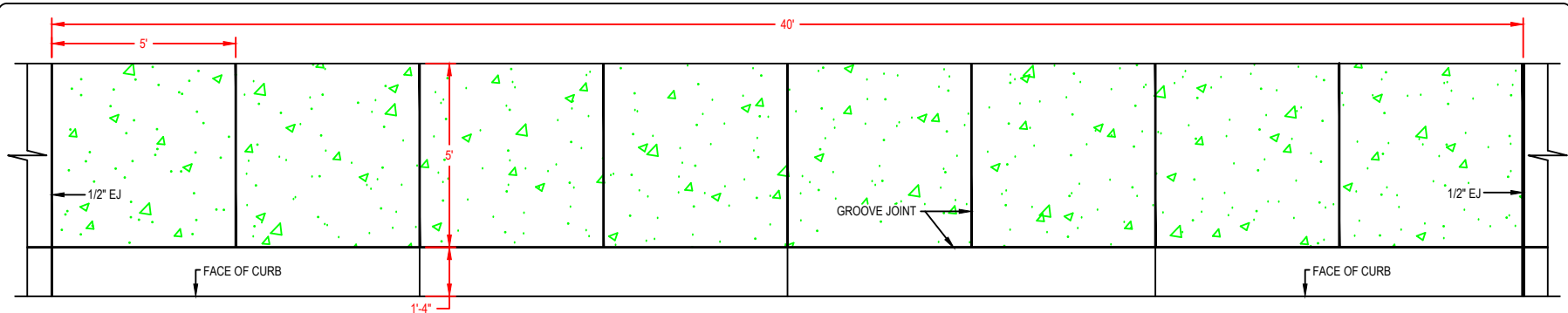
TRANSVERSE C.J. IN SIDEWALK



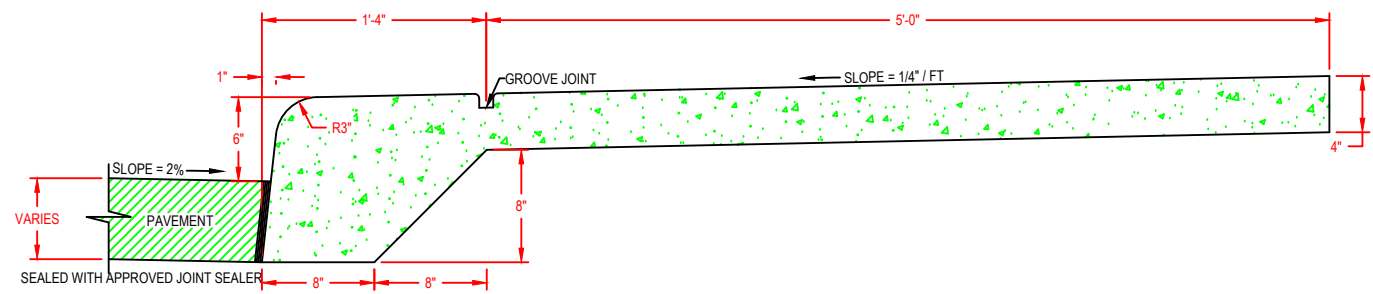
TRANSVERSE E.J. IN SIDEWALK

- NOTES:**
1. A GROOVE JOINT 1" DEEP WITH 1/3" RADII SHALL BE REQUIRED IN THE CONC. SIDEWALK AT 5' INTERVALS. ONE 1/2" EXPANSION JOINT WILL BE REQUIRED AT 40'. A 1/2" E.J. WILL BE REQUIRED WHERE THE SIDEWALK JOINS RIGID STRUCTURES.
 2. CONC. COMPRESSIVE STRENGTH SHALL BE 3600 PSI. IN 28 DAYS.
 3. SEE STD. # __ FOR E. J. & GROOVE JOINT DETAIL.
 4. SEE STD. # __ FOR DRIVEWAY DETAIL.
 5. MONOLITHIC CURB & SIDEWALK TO BE CONSTRUCTED ONLY WHEN REPLACING GRANITE CURB OR AT LOCATIONS APPROVED BY THE APPROPRIATE ENGINEER.

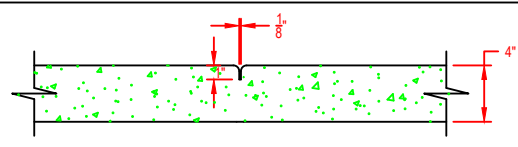
	<p>Mailing Address: P.O. BOX 487 Blacksburg, SC 29702 Town Hall: (864) 839-2332 Cell: (866) 967-6948 Email: dot@townofblacksburg.com Website: www.townofblacksburgsc.com</p>	<p>Project Name: Town of Blacksburg South Carolina 105 S. Shelby St. Blacksburg, SC 29702 105 S. Shelby St. Blacksburg, SC</p>	<p>Sheet Title: SIDEWALK</p>	<p>Drawn By: Samantha Lee Designed By: Patrick N. Sodek Date: 12-01-2021 Scale: N.T.S. Job No.: CP/17-120114</p>	<p>Sheet No.: CP</p>
--	--	--	---	--	---------------------------------



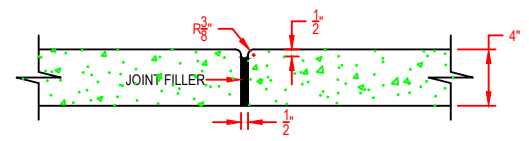
SIDEWALK PLAN VIEW
N.T.S.



SECTION A-A
N.T.S.



TRANSVERSE C.J. IN SIDEWALK
N.T.S.



TRANSVERSE E.J. IN SIDEWALK
N.T.S.

- NOTES:**
1. A GROOVE JOINT 1" DEEP WITH 1/3" RADII SHALL BE REQUIRED IN THE CONC. SIDEWALK AT 5' INTERVALS. ONE 1/2" EXPANSION JOINT WILL BE REQUIRED AT 40'. A 1/2" E.J. WILL BE REQUIRED WHERE THE SIDEWALK JOINS RIGID STRUCTURES.
 2. CONC. COMPRESSIVE STRENGTH SHALL BE 3600 PSI. IN 28 DAYS.
 3. SEE STD. # __ FOR E. J. & GROOVE JOINT DETAIL.
 4. SEE STD. # __ FOR DRIVEWAY DETAIL.
 5. MONOLITHIC CURB & SIDEWALK TO BE CONSTRUCTED ONLY WHEN REPLACING GRANITE CURB OR AT LOCATIONS APPROVED BY THE APPROPRIATE ENGINEER.

Blank box for additional information.

Mailing Address: P.O. BOX 487
Blacksburg, SC 29702
Town Hall: (864) 839-2332 | Cell: (866) 967-6948
Email: dotlow@townofblacksburg.com
Website: www.townofblacksburgsc.com

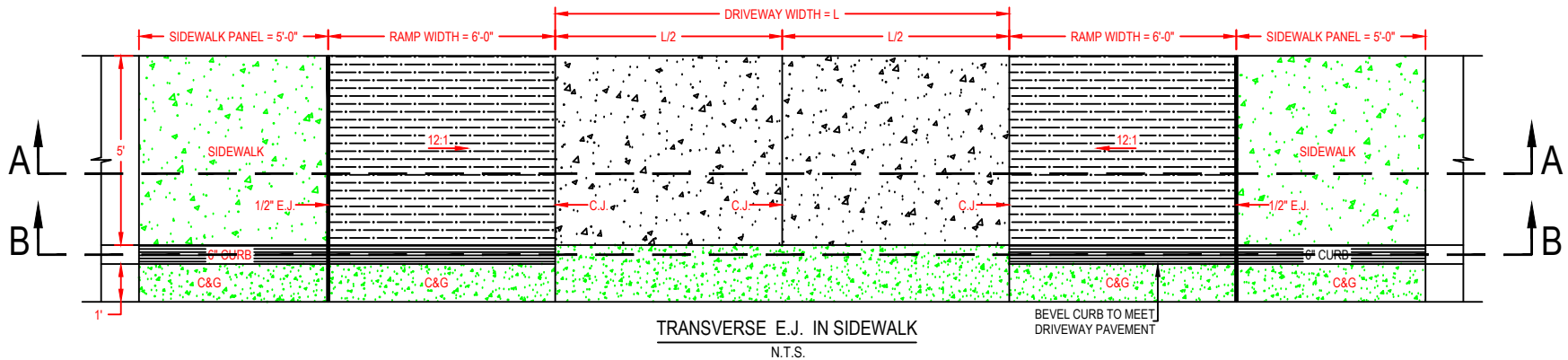
Project Name:
Town of Blacksburg South Carolina
105 S. Shelby St. Blacksburg, SC 29702
105 S. Shelby St. Blacksburg, SC

Sheet Title:
MONOLITHIC CONC. CURB & SIDEWALK

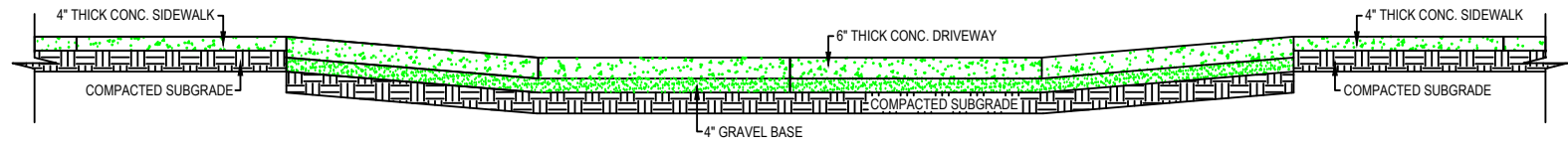
Drawn By: Samantha Lee
Designed By: Patrick N. Sodek
Date: 12-01-2021 **Scale:** N.T.S.
Job No.: CP/17-120114

Sheet No.:
CP

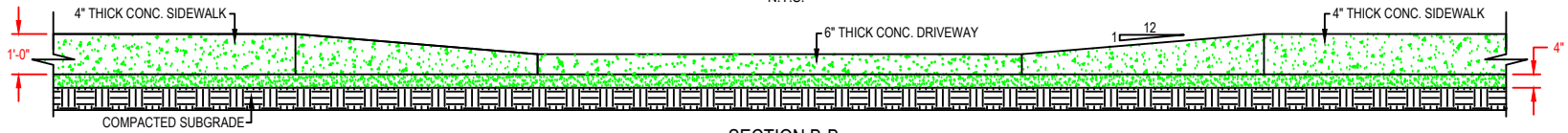




TRANSVERSE E.J. IN SIDEWALK
N.T.S.



SECTION A-A
N.T.S.

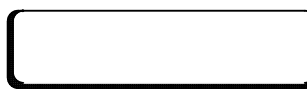


SECTION B-B
N.T.S.

DRIVEWAY TYPE			
RESIDENTIAL	MIN. (FT)	MAX. (FT)	
ONE-WAY	12'	15'	
TWO-WAY	18'	24'	
COMMERCIAL	MIN. (FT)	MAX. (FT)	
ONE-WAY	15'	18'	
TWO-WAY	24'	30'	

NOTES:

- 1/2" E. J. REQUIRE INSTALLATION OF 1/2" THICK OF BITUMINOUS FIBER THRU THE ENTIRE SLAB.
- TO LIMIT STORM WATER FLOW DOWN DRIVEWAYS, USE STD. #__ FOR DRIVEWAYS NEAR LOW POINTS.
- ALL DRIVEWAYS MUST MEET THE CURRENT TOWN DRIVEWAY REGULATIONS & NCDOT REQUIREMENTS FOR SPACING, SIGHT DISTANCE, & OFFSETS FROM PROPERTY LINES & INTERSECTIONS.
- "A" BREAKOVER SHALL BE 8% OR LESS (A = ALGEBRAIC DIFFERENCE).
- PRIOR APPROVAL IS REQUIRED ON GRADES EXCEEDING WHAT ARE SHOWN.
- ALL CONC. TO BE 3600 P.S.I. COMPRESSIVE STRENGTH.
- ALL CURB, C&G & SIDEWALKS ARE TO BE REMOVED TO THE NEAREST JOINT BEYOND NEW CONSTRUCTION OR CUT W/ A SAW & REMOVED. SAW CUT OR JOINT TO BE PERPENDICULAR TO EDGE OF EXIST. PAVEMENT. SEE STD. #__ FOR DETAIL OF E.J. AN GROOVE JOINT.



Mailing Address: P.O. BOX 487
Blacksburg, SC 29702
Town Hall: (864) 839-2332 | Cell: (866) 967-6948
Email: dot@townofblacksburg.com
Website: www.townofblacksburgsc.com

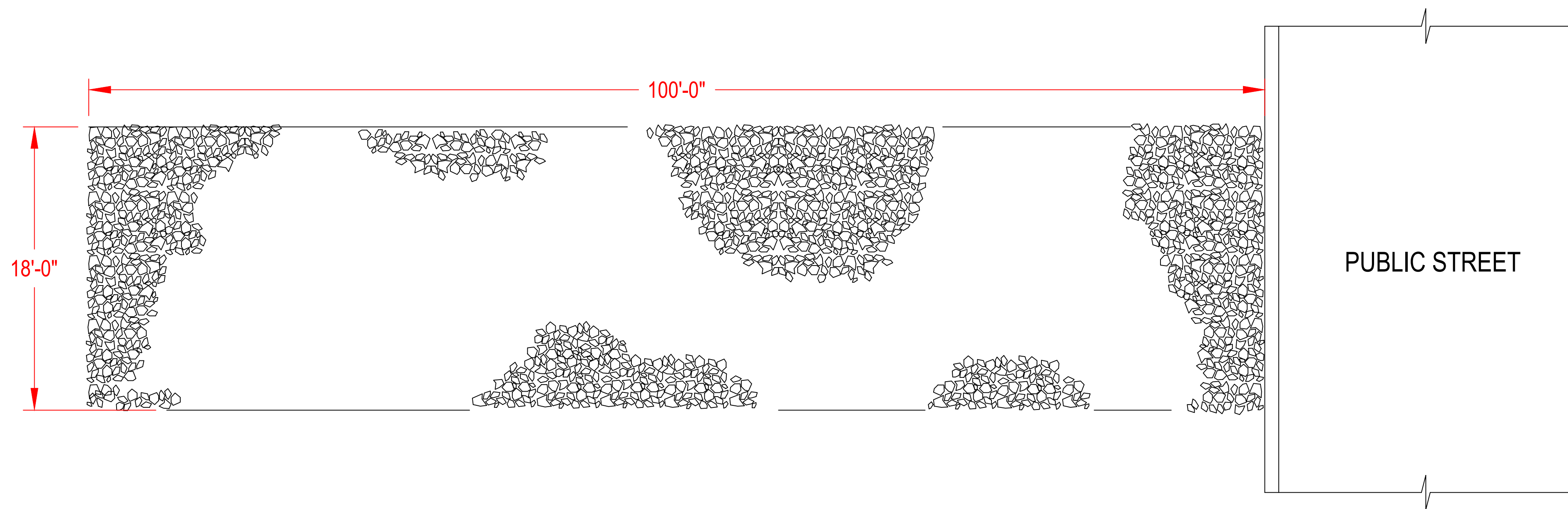
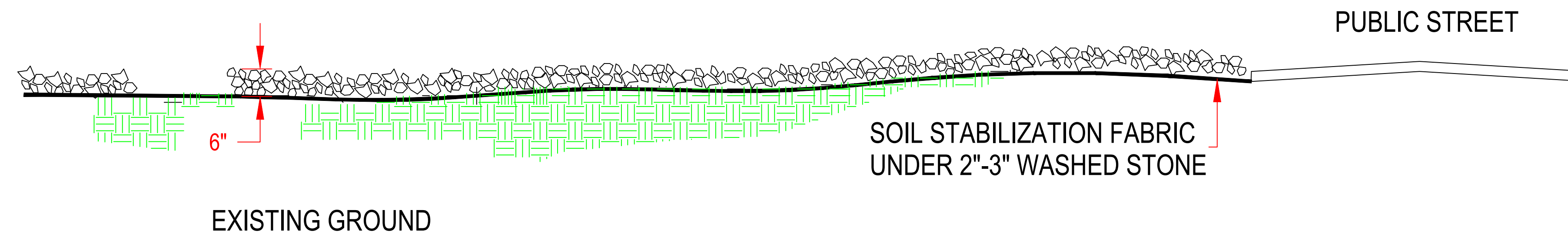
Project Name:
Town of Blacksburg South Carolina
105 S. Shelby St. Blacksburg, SC 29702
105 S. Shelby St. Blacksburg, SC

Sheet Title:
ONE-WAY COMMERCIAL DRIVEWAY

Drawn By: Samantha Lee
Designed By: Patrick N. Sodek
Date: 12-01-2021 | Scale: N.T.S.
Job No.: CP/17-120114

Sheet No.:
CP





1. A STABILIZED ENTRANCE PAD OF 2"-3" WASHED STONE SHALL BE LOCATED WHERE TRAFFIC WILL ENTER OR LEAVE THE CONSTRUCTION SITE ONTO A PUBLIC STREET.
2. FILTER FABRIC OR COMPACTED CRUSHER RUN STONE SHALL BE USED AS A BASE FOR THE CONSTRUCTION ENTRANCE.
3. THE ENTRANCE SHALL BE MAINTAINED IN A CONDITION WHICH WILL PREVENT TRACKING OR FLOWING OF SEDIMENT ONTO PUBLIC STREETS OR EXIST. PAVEMENT. THIS MAY REQUIRE PERIODIC TOP DRESSING W/ ADDITIONAL STONE AS CONDITIONS WARRANT & REPAIR OR CLEANOUT OF ANY MEASURES USED TO TRAP SEDIMENT.
4. ANY SEDIMENT SPILLED, DROPPED, WASHED, OR TRACKED ONTO PUBLIC STREETS MUST BE REMOVED IMMEDIATELY.
5. WHEN APPROPRIATE, WHEELS MUST BE CLEANED TO REMOVE SEDIMENT PRIOR TO ENTERING A PUBLIC STREET. WHEN WASHING IS REQUIRED, IT SHALL BE DONE IN AN AREA STABILIZED W/ CRUSHED STONE WHICH DRAINS INTO AN APPROVED SEDIMENT BASIN.
6. COUNTY MAY REQUIRE A STD. COMMERCIAL DRIVEWAY TO ACCESS THE CONSTRUCTION SITE IF THE DRIVEWAY IS ON A THOROUGHFARE.

Mailing Address: P.O. BOX 487
 blacksburg, SC 29702
 Town Hall: (864) 839-2332 Cell: (866) 967-6948
 Email: dalton@townofblacksburg.com
 Website: www.townofblacksburgsc.com

Project Name:
 Town of Blacksburg South Carolina
 105 S. Shelby St. Blacksburg, SC 29702
 105 S. Shelby St. Blacksburg, SC

Sheet Title:
STABILIZED CONSTRUCTION ENTRANCE

Drawn By: Smantha Lee
 Designed By: Patrick N. Sadek
 Date: 12-01-2021 Scale: N.T.S.
 Job No.: CP/17-120114

Sheet No.:
 CP

